

4

3

2

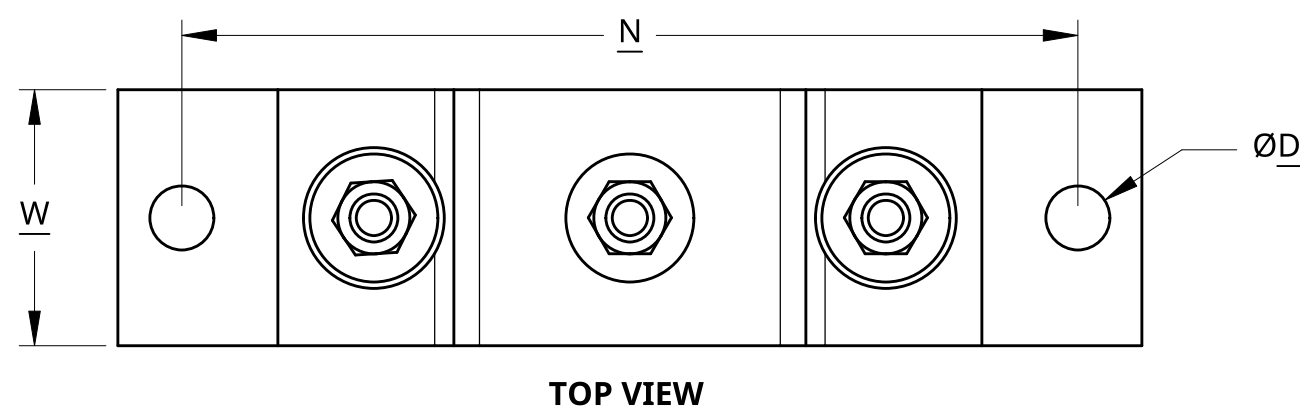
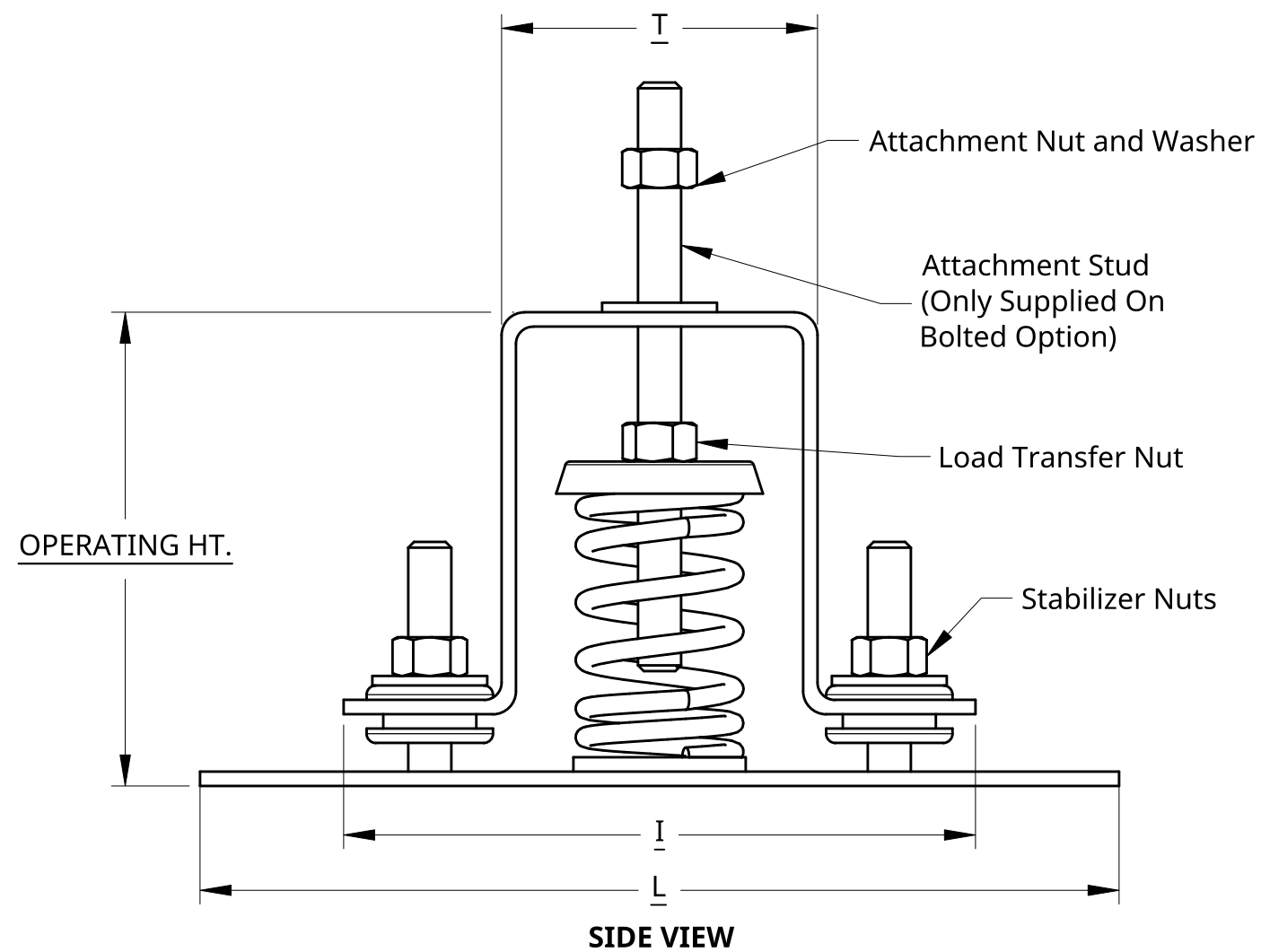
1

ISOLATOR DIMENSIONS (INCHES)

HOUSING	OPERATING HT.	L	I	T	N	W	D
H	4.50	8.00	5.50	2.75	7.00	2.00	0.5 dia.
H Bolted	4.50	8.00	5.50	2.75	7.00	2.00	0.5 dia.

Installation Steps:

1. Read the entire installation instructions before installing the VIBmount H Isolators.
2. Attach the unit to the attachment stud using the nuts and washers to mechanically fasten the isolators to the unit.
3. Place the unit on the isolators transferring the load to the isolators.
4. Rotate the 3/8" load transfer nut clockwise to transfer the weight of the unit from the housing to the spring coil. Turn the 3/8" load transfer nut one or two turns at each isolator in succession to prevent the entire weight from being supported by only one isoaltor.
5. Continue to rotate the load transfer nut until the housing has lifted off the isolator base.
6. Make sure the 3/8" washer under the stabilizer nut is loose to ensure the load transfer nut has not been over tightened.
7. Once the unit is secured and supported by the isolators, do not attempt to move the equipment by pushing or sliding the equipment laterally. This can result in bent/broken springs, spring caps, and bolts. Instead pick the equipment up vertically to remove all weight from the isolators before moving.



Notes:
1. Drawing not to scale.

UNLESS OTHERWISE SPECIFIED, DIMENSIONS ARE IN INCHES		NAME	DATE	VIBmount H Installation Instructions	
.XX = ±.0-	ANGULAR = ± °	DRAWN	G.Fry	02/16/2026	TITLE
.XXX = ±.00-	FRACTIONAL = ±	CHECKED	C.Tupa		
.XXXX = ±.000-		APPROVED			
SURFACE FINISH ✓		DO NOT SCALE DRAWING			SIZE
BREAK ALL SHARP EDGES AND REMOVE BURRS		THIRD ANGLE PROJECTION			
MATERIAL		FINISH			SCALE
MATERIAL		FINISH			SCALE 1:1.5
MATERIAL		FINISH			WEIGHT
MATERIAL		FINISH			SHEET 1 of 1
MATERIAL		FINISH			REV.
MATERIAL		FINISH			SIZE B
MATERIAL		FINISH			DWG NO. VIBmount H



SCALE 1:1.5 WEIGHT SHEET 1 of 1

4

3

2

1