



Product Data Sheet: VIBmount-SSD

Applications

- Floor or roof mount
- Equipment with fluctuating operating weight
- Maximum capacity

Features

- Channel housing with double steel coil spring
- Integrated seismic and wind restraints
- Elastomeric isolation pad
- Easy installation
- 1" or 2" deflection

VIBmount-SSD Isolator

The VIBmount-SSD isolator VIB-ISO's maximum capacity roof curb or floor-mount isolator ideal for equipment with fluctuating operating weights. Designed to integrate with any roof curb or floor-mounted piece of equipment, the VIBmount-SSD isolator will aid to reduce the vibration from large mechanical and electrical equipment to the building structure through its assembled VIBmount-SSD double spring capacity. The VIBmount-SSD has integrated lateral and vertical restraints in order to account for seismic and wind loads. Additionally, the channel design of the VIBmount-SSD housing accounts for additional seismic load capacity.

VIB-ISO will engineer each VIBmount-SSD isolator to match your specified unit and meet any additional customer requirements. The VIBmount-SSD isolator is available in either 1" or 2" deflection and is shipped fully assembled with the springs and restraints installed at VIB-ISO in order to reduce onsite labor requirements. The springs are made of structural steel and sit on an elastomeric mount. The housing is made entirely of structural steel. On site, the VIBmount-SSD design allows for quick assembly requiring only basic tools for installation.



Assembled VIBmount-SSD Isolator

VIBmount-SSD Attributes

The VIBmount-SSD isolator is designed to reduce the vibration from large-scale, roof curb or floor-mounted mechanical and electrical equipment with fluctuating operating weights when additional seismic and wind restraints are required. For buildings in which the end user demands critically quiet areas, vibration isolation control of large mechanical and electrical equipment is a necessity.

The VIBmount-SSD isolator uses integrated seismic restraints to allow for the equipment to be attached to the building while also allowing for flexing during a seismic event. This integrated design meets all applicable IBC (International Building Code) and ASCE (American Society of Civil Engineers) codes and requirements. The VIBmount-SS isolator is recommended for isolating equipment with large fluctuating operating weights that also demand high seismic capacity.

SOURCED IN USA



VIB-ISO

P.O. Box 1022
Wooster, OH 44691
1-800-735-9645



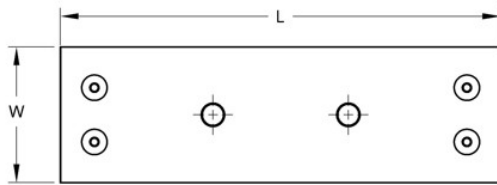
Product Data Sheet: VIBmount-SSD

VIBmount-SSD Specifications

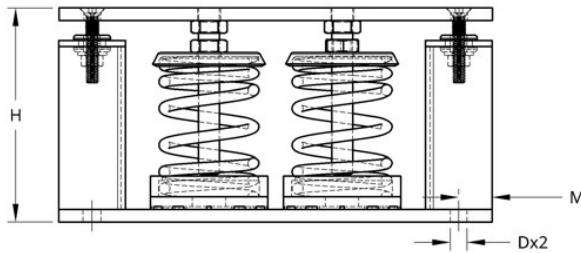
1. Vertically and laterally restrained spring isolator with constant free and operating height.
2. Elastomeric pad for high-frequency noise reduction.
3. Steel coil and housing assembly, painted.
4. Minimum coil overload of 50%.
5. Housing may be used for blocking during equipment installation.
6. Meets IBC and ASCE code specifications
7. 100% Made in the U.S.A.

ISOLATOR DIMENSIONS (INCHES)								
TYPE	H	L	I	W	T	t	D	M
VIBmount-SSD-1	6.25	9.00	5.50	4.00	0.25	0.38	0.4375	1.00
VIBmount-SSD-2	8.00	9.00	5.50	4.00	0.25	0.38	0.4375	1.00

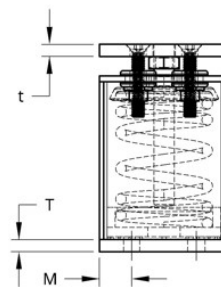
SPRING DATA (INCHES AND POUNDS)					
HOUSING	TYPE	RATING	COLOR	FREE HT.	O.D.
SSD	1	2000	RED	4.20	3.00
SSD	1	2240	RED/BLACK	4.20	3.00
SSD	1	2400	GRAY	4.20	3.00
SSD	1	2640	GRAY/BLACK	4.20	3.00
SSD	1	3400	BLACK	4.20	3.00
SSD	2	3640	BLACK/BLACK	4.20	3.00
SSD	2	2790	RED/BLUE	6.00	3.50
SSD	2	2790	RED/GRAY	6.00	3.50
SSD	2	3200	BLACK	6.00	3.50
SSD	2	3450	BLACK/BLUE	6.00	3.50
SSD	2	4000	BLACK/GRAY	6.00	3.50



TOP VIEW



FRONT VIEW



SIDE VIEW

For more information regarding the VIBmount-SSD Isolator, please visit us at www.vibiso.com.