

Required Tools/ Supplies:

- (2) 9/16" Open-End wrench
- Level
- Tape measure
- All thread rod
- Adjustment nut

Supplied Parts:

- Hanger assembly with spring.

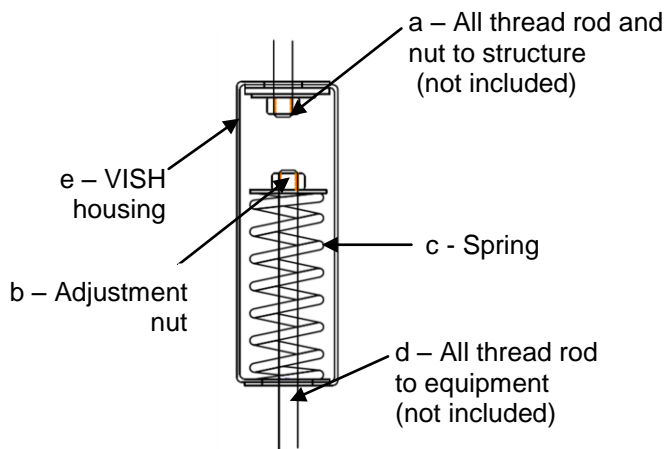


Figure 1 -
VISH drawing



Figure 2 -
VISH shown as
delivered with zip ties

Step by Step Instructions:

1. Read the entire installation instructions before installing the VISH spring hanger.
2. If drawings have been provided showing hanger location, locate each hanger at the position shown.
3. Clip zip tie from VISH spring hanger.
4. Attach the VISH spring hanger to the structure via the upper, customer-supplied all thread rod and nut assembly (a).
5. If installing the VISH spring hanger to support pipe or ductwork, install the pipe ductwork using solid, all thread rod. After installing the complete system, remove the solid, all thread rod and replace with the VISH spring hanger. This is done by removing 1-2" of length from the all thread rod.
6. To level the equipment, turn the adjustment nut (b) to the right to raise the equipment, or left to lower it.
7. Once Step 6 is complete, the VISH spring hanger has been properly installed.